

## ENHANCING WIND TURBINE PERFORMANCE THROUGH MAXIMUM POWER POINT TRACKING CONTROL

Ms.Srilavanya Sajja<sup>1</sup>, Mr. Srinivasulu Boyineni<sup>2</sup>

<sup>1</sup>Assistant Professor, Department of CSE ,Malla Reddy Engineering College For Women, (Autonomous Institution), Maisammaguda,Dhulapally,Secunderabad,Telangana-500100

<sup>2</sup>Assistant Professor, Department of CSE ,Malla Reddy Engineering College For Women, (Autonomous Institution), Maisammaguda,Dhulapally,Secunderabad,Telangana-500100

### ABSTRACT

A variable-speed, grid-connected direct-driven Permanent Magnet Synchronous Generator (PMSG) wind turbine is presented with an MPPT control technique in this study. The PMSG is connected to the grid through a three-phase diode rectifier followed by a boost converter controlled using the MPPT technique. This ensures a constant DC bus voltage under varying wind speeds and maximizes the available power extraction. The grid-side inverter then produces a voltage with a fundamental component in phase with the grid frequency, and it can inject the active nominal power into the grid. The study reviews various power converter topologies and MPPT techniques for variable-speed wind turbine systems. The sensorless system proposed estimates rotor speed based on known generator parameters, while measuring the input DC voltage and current of the boost converter. A significant challenge in this approach was adapting and modifying the MPPT technique to ensure high efficiency in large-scale wind turbine systems. The performance of the system is evaluated with MATLAB/SIMULINK simulations for a 2 MW wind turbine.

With the generator operating at its optimum speed for a given wind velocity, the WECS can extract maximum power output efficiency. MPPT control helps determine the best operating point; however, fluctuating wind speeds are challenges to this control. Adaptive control techniques are discussed as a solution, and an MPPT control strategy based on Adaptive Perturbation and Observation (APO) is proposed. Numerical simulations demonstrate the superior performance of the proposed adaptive control strategies when compared to conventional Perturbation and Observation (CPO) controllers, and hence, the overall system performance is improved.

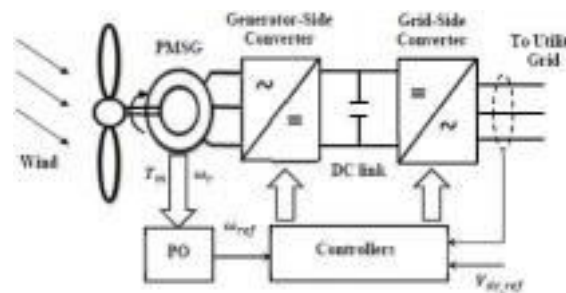
**Keywords-** Permanent Magnet Synchronous Generator (PMSG), Wind Energy Conversion System (WECS), Maximum Power Point Tracking (MPPT), The terms "wind turbine," "conventional interference and disturbance," and "adaptive interference and disturbance" are all used.

### 1. INTRODUCTION

Currently, Across the world, renewable energy projects are being developed as the main energy sources. A system for converting wind energy (WECS) under consideration is

consisting of a Permanent Magnet Synchronous Generator connected to a Little Wind Turbine with Variable Speed (PMSG). Figure 1 shows the WECS block architecture, which uses controllers for both the generator and grid side converters.

The windmill with variable speed and fixed pitch must have the Maximum Power Point Tracking (MPPT) facility to operate at its best finding and following the literature provides information on the maximum power point using a variety of methodologies, including Traditional Perturbation, Control of the Power Signal Feedback (PSF) Observation(CPO) To acquire the ideal the speed of a wind turbine for each wind speed, the CPO reliable, strong, and simple technique of modifying the generator speed. To ensure maximum power, this technique only slightly modifies the rotor speed, and it continuously tracks variations untill it achieves 0.0, or zero, output power. We developed and applied adaptive MPPT control techniques known as adaptive interference and disturbance (APO) approach enhance the MPPT properties in WECS's in this study.



**Fig. 1. Block diagram of a WECS**

## I.WINDENERGY CONVERSION SYSTEM

The fixed pitch wind turbine, PMSG, converters, and controls that make up the WECS are seen in Fig. 1. Typically, a rectifier (generator side converter) The generated electrical power first needs to be converted to a DC one It must then be transformed via grid-side converter to AC electricity with regulated current (inverter stage) before being injected into the utility grid. Wind kinetic energy from wind turbines is used to drive the PMSG shaft mechanically. As a result, the mechanical power generated is converted into electrical energy by the PMSG. One approach to represent the power produced by wind is as the wind's velocity in a turbine blade (kinetic energy). a cross- adorned cylinder the location of the rotor blade's radius sectional area equals 2, where. Thus, the shape of the wind energy produced is as follows.

$$P_w = 0.5\rho AV_w^3 \quad (1)$$

When the air density is given by. Usually speaking, wind turbines are made to functioning a

certain range of wind speeds. when the wind speed is lower than the rated wind speed for the turbine-its mechanical power increases cubically with wind speed in terms of value, as demonstrated by

$$P_m = C_p P_w = \frac{1}{2} \rho C_p A V_w^3 \quad (2)$$

Hence, and are ratio between tip speed and pitch angle, respectively, which functionally depend on the efficiency of power conversion.

You can define the tip speed ratio as follows [2]:

$$\lambda = \omega_r R_r / V_w \quad (3)$$

$$C_p(\lambda, \theta) = 0.5 \left( 116 \frac{1}{\lambda_i} - 0.4\theta - 5 \right) e^{-\left(\frac{\theta}{\lambda_i}\right)} + 0.0068\lambda_i \quad (4)$$

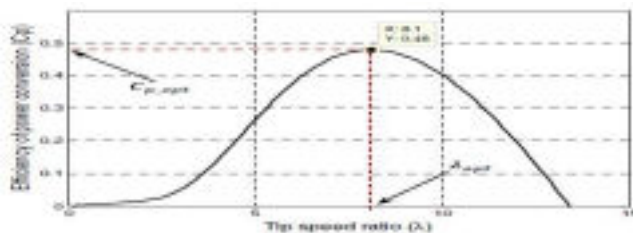
where,  $\omega_r$  is the rotor speed. Hence,  $\lambda_i$  can be obtained as follows:

$$1/\lambda_i = 1/(\lambda + 0.08\theta) - 0.035/(1 + \theta^3) \quad (5)$$

When keeping the pitch angle  $\theta$  at zero degree,  $C_p$  will be a function of  $\lambda$  only as shown below [19]:

$$C_p(\lambda) = \left( \frac{60.04 - 4.67\lambda}{\lambda} \right) e^{\left( \frac{-21 + 0.735\lambda}{\lambda} \right)} + \frac{0.0068\lambda}{1 - 0.035\lambda}$$

The highest power coefficient value  $C_p$  opt in theory is roughly 0.59, although in practise,  $C_p$  opt can have a value that is less than 0.59.  $C_p$  opt, for instance, has theoretical value of 0.48. According to this number is obtained at an optimal tip speed ratio of =8.1, per [2,] which demonstrates the connection between two wind turbine parameters  $C_p$  and  $\lambda$ .



**Fig. 2. Power coefficient characteristic versus tip speed ratio**

Winds up to 12 m/s have their strongest point. should be tracked by a WECS through the control system to ensure that it operates as efficiently as possible. technique that should maintain these circumstances throughout the process, regardless of changes in speed.

## 2 . LITERATURE SURVEY

The literature reports on a number of MPPT strategies and how they were put into practise. While choosing an MPPT technique for a certain application, researchers are almost always



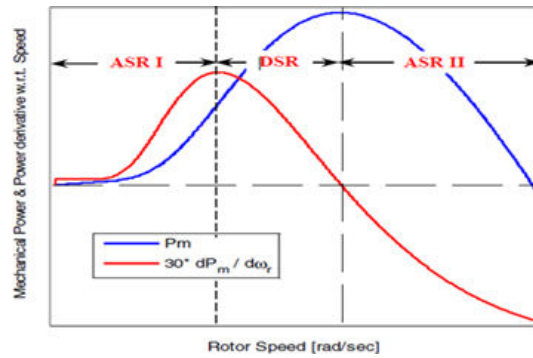
perplexed. Curve fitting, fractional short circuit current, fractional open circuit voltage, look up tables, and one cycle were among the few techniques that were unfortunately available in this subject. Before 2007, comments on MPPT approaches were included under the Control, Perturb and Observe, Incremental Conductance, and Feedback techniques. However, numerous new MPPT methods, including those based on fuzzy logic, artificial neural networks, adaptive perturbation and observation, estimated perturbation and perturbation, genetic algorithms, adaptive neuro fuzzy, and particles warm optimization, have been reported and demonstrated since then. A review of all the efficient and effective MPPT methods proposed before 2007 and after that up until 2013 must be prepared. A review and comparison of MPPT approaches based on their benefits, drawbacks, the presence of control variables, the types of circuits used, the difficulty of the algorithm, the difficulty of implementing it on hardware, and the kinds of scientific and It describes a commercial application. Perturb & Observe (P&O) and Incremental Conductance (IC) are the two MPPT approaches that are most frequently utilized due to their ease of implementation, the short time required to track the maximum power point, as well as other economic factors. P&O interprets a continuous change in MPP caused by unexpectedly changing weather circumstances (irradiation level) as a change in MPPT caused by disturbance rather than irradiation. results in the erroneous MPPT being calculated [6]. Nevertheless, the Incremental Conductance approach eliminates this issue because it uses two samples of voltage and current to calculate MPPT. The most popular MPPT techniques are Perturb & Observe (P&O) and Incremental Conductance because they are easy to apply, take less time to track the maximum power point, and are also more practical from an economic standpoint. As MPPT fluctuates continuously in response to abrupt changes in the weather (irradiation level), P&O interprets this as an MPPT change owing to disturbance rather than irradiation and occasionally results in the calculation of the incorrect MPPT[7]. Nevertheless, the Incremental Conductance technique does not haven this issue because it computes MPPT using two samples of voltage and current.

### 3 . PROPOSED SYSTEM

There is only one rotational speed that can operate a wind turbine at its highest power point for each wind speed within its operating range mechanical power at its highest level. The Conventional Perturbation and Observation (CPO) optimization technique is often used in WECS control to discover the optimal operating point that would maximize the power extracted from a system. In this study, step-size Adaptive Perturbation and Perturbation(APO)techniques are created to improve the effectiveness and precision of the CPO methodology.



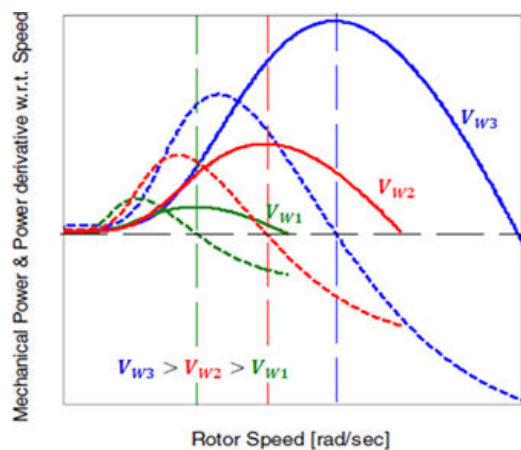
zero for tracking the ideal operating point with precision.



**Fig. 5. Mechanical energy, together with its derivatives, respect to rotor speed.**

It should also be noticed that the value of is dependent the wind's value, as shown in Fig. 4, where it is depicted as a solid lines and is represented by dashed lines. The various colours in the figure indicate that those curves were obtained for varied wind speed values (blue for high wind speed, green for moderate wind speed and intermediate-level red colour. In other words, for the same speed area and Considering numbers that account for various wind speeds are proportionate to the wind speed values.

As a result, the suggested control rules often accelerate the search for the optimum operating point and reduce variations that can occur when using the CPO technique. As previously stated, the derivation of mechanical power with regard to rotor speed is employed to determine the speed step-size. Two potential applications have been suggested. A study provides adaptive, in which the first has been treated as a direct proportion of and is represented the following (7) Identify a variable parameter.

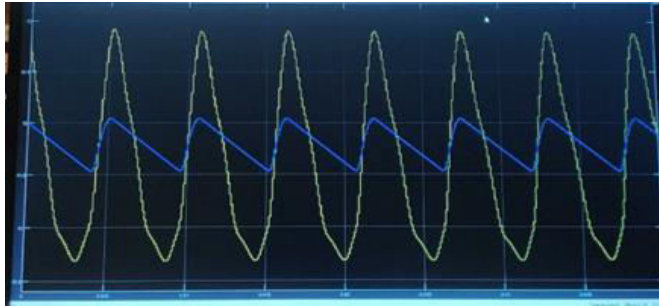


**Fig.6. For various wind speeds, mechanical power and its derivatives with regard to rotor speed.**

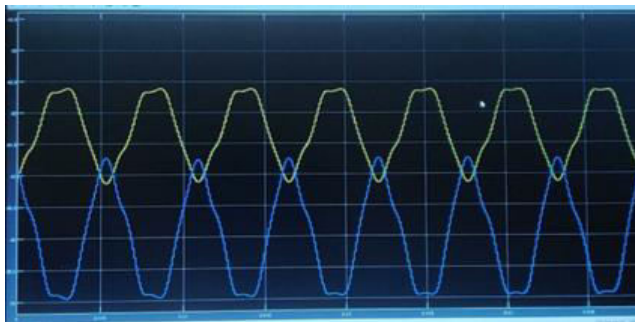
#### 4. RESULTS AND DISCUSSION

Back-to-back interface-based WECS and PMSG numerical simulations were conducted to highlight and assess the efficacy of the suggested APO control mechanisms. The MATLAB / Simulink programme was used to perform conversions. During the regular change in wind

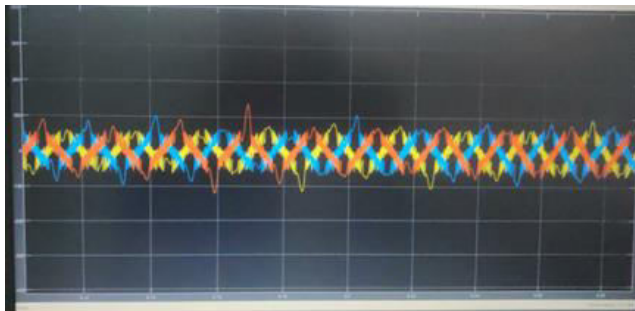
speed, the values of  $\lambda$  and  $\omega_r$  remain at their optimum values, despite the variation in the wind and rotor speeds indicating good tracking performance of the WECS. However, in case of rapid change of the wind speed, all cases fail to obtain optimum tracking of the operating points. It can therefore be concluded from the results of simulation that the proposed control algorithm has good capability of tracking peak power points. The method also has good application potential in other types of WECS.



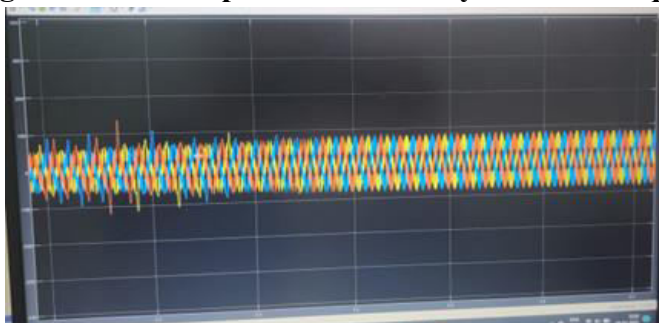
**Fig.6. Reference wind speed obtained by APO technique**



**Fig .7.Generated maximum speed(blue solid line)and rotor speed.**



**Fig.8. Mechanical power obtained by APO technique with respect to rotor speed**



**Fig.9. Maximum voltage**

## 5. CONCLUSION

Wind energy conversion system has been receiving widest attention among the various renewable energy systems. Extraction of maximum possible power from the available wind power has been an important research area among which wind speed sensor less MPPT control has been a very active area of research. In this chapter, a concise review of MPPT control methods proposed in various literature's for controlling WECS with various generators have been presented. The optimal operation of WECS has been proposed in this paper using APO techniques. By using computer models to test the suggested control mechanisms for variations in wind speed, their effectiveness has been proven. The proposed APO controllers have been implemented, and simulation results support their ability to increase the MPPT performance's accuracy and efficiency. There is a continuing effort to make converter and control schemes more efficient and cost effective in hopes of developing an economically viable solution to increasing environmental issues. Wind power generation has grown at an alarming rate in the past decade and will continue to do so as power electronic technology continues to advance.

## 6. REFERENCES

- [1] T. Shanker and R. K. Singh, "Wind energy conversion system: review," 2012 Students Conference on Engineering and Systems (SCES), pp. 1-6, 16-18 March 2012. [2] M. A. Abdullah, A. H. M. Yatim, C. W. Tan C. W., and R. Saidur, "A review of maximum power point tracking algorithms for wind energy systems," *Renewable and Sustainable Energy Reviews*, vol. 16, no. 5, pp. 3220-3227, June 2012.
- [3] H. Shin, C. Xu, J. Lee, J. La, and Y. Kim, "MPPT control technique for a PMSG wind generation system by the estimation of the wind speed," 15th International Conference on Electrical Machines and Systems (ICEMS 2012), pp. 1-6, 2012.
- [4] H. Zhao, Q. Wu, C. N. Rasmussen and M. Blanke, "L1 Adaptive Speed Control of a Small Wind Energy Conversion System for Maximum Power Point Tracking," *IEEE Transactions on Energy Conversion*, Vol. 29, no. 3, pp. 576-584, 2014. [5] A. J. Mahdi, W. H. Tang, and Q. H. Wu, "Estimation of tip speed ratio using an adaptive perturbation and observation method for wind turbine generator systems," *IET Conference on Renewable Power Generation (RPG 2011)*, pp. 1-6, 6-8 September 2011. [6] J. S. Thongam and M. Ouhrouche, "MPPT control methods in wind energy conversion systems," *Fundamental and Advanced Topics in Wind Power*, pp. 339-360, 2011. [7] S. M. R. Kazmi, H. Goto, H. Guo, and O. Ichinokura, "A novel algorithm for fast and efficient speed-sensor-less maximum power point tracking in wind energy conversion systems," *IEEE Transactions on Industrial Electronics*, vol. 58, no. 1, pp. 29-36, 2011. [8] s. Wang, Z. Qi, and T. Undeland, "State space averaging modeling and analysis of disturbance injection method of MPPT for small wind turbine generating systems," in *Proc. APPEEC*, 2009.
- [9] R. J. Wai, C. Y. Lin, and Y. R. Chang, "Novel maximum-power extraction algorithm for PMSG wind generation system," *IET Electric Power Applications*, vol. 1, no. 2,



March 2007, pp. 275-283.

[10] J. Yaoqin, Y. Zhongqing, and C. Binggang, "A new maximum power point tracking control scheme for wind generation," in Proc. International Conference on Power System Technology 2002 (PowerCon 2002). 13-17 Oct., 2002. pp.144-148.

[11] J. Hui and A. Bakhshai, "A new adaptive control algorithm for maximum power point tracking for wind energy conversion systems," in Proc. IEEE PESC 2008, Rhodes, 15-19 June, 2008. pp. 4003-4007.

[12] J. Hui and A. Bakhshai, "Adaptive algorithm for fast maximum power point tracking in wind energy systems," in Proc. IEEE IECON 2008, Orlando, USA, 10-13 No. 2008, pp. 2119-2124.